



Οργάνωση:
Ελληνική
Οργάνωση
Πρόληψης
και Εκπαίδευσης
για τον Καρκίνο
(ΕΟΠΕΓΚ)

Σε συνεργασία με:
Ε' Παθολογική Ογκολογική Κλινική,
Νοσοκομείο «Υγεία»

Διαδικτυακή Ημερίδα

Updates on Gastrointestinal Cancers

Available
on line at:
www.livemed.gr

WEB
ONLY

Τετάρτη

7 Σεπτεμβρίου
2022

Επιστημονικό
πρόγραμμα

radiation therapy for lower gastrointestinal malignancies

John Georgakopoulos
Radiation Oncologist
Assistant Professor Athens Medical School

locally advanced rectal cancer
LARC

new emerging data that may
change daily clinical practice

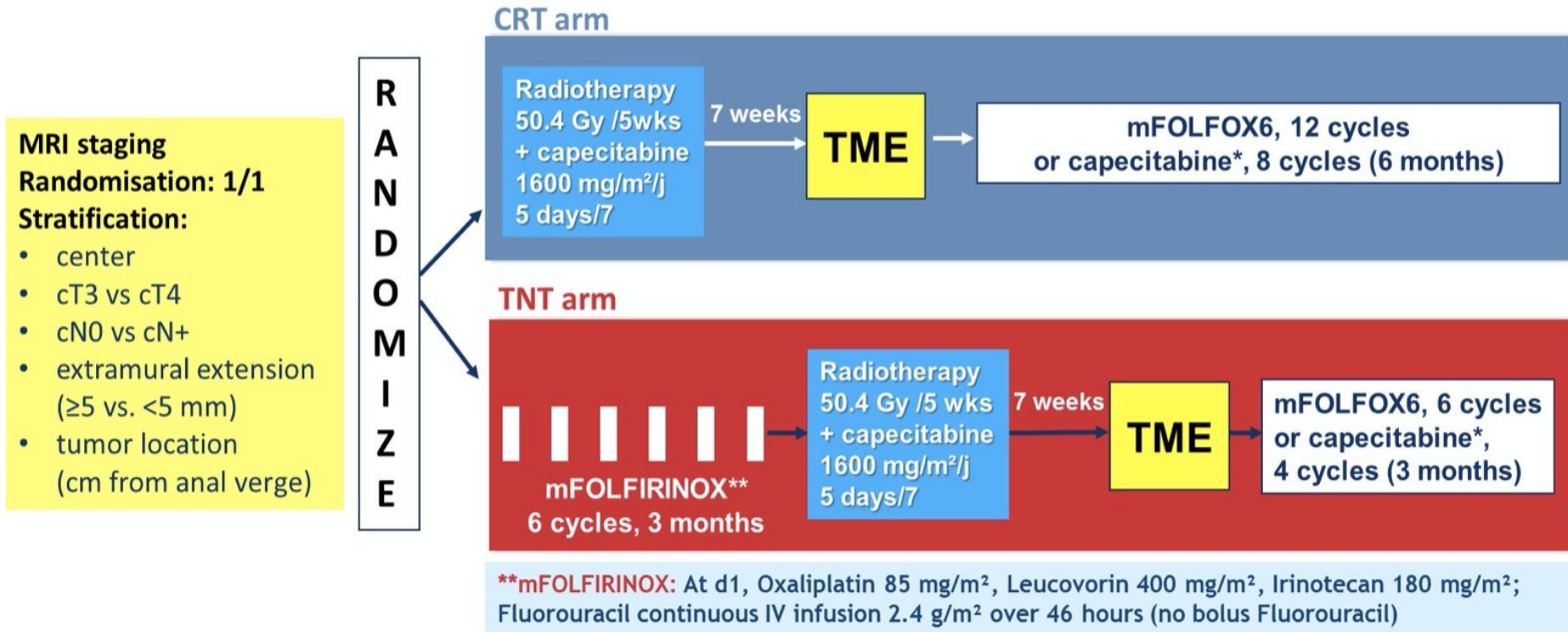
total neoadjuvant therapy

Total Neoadjuvant Therapy

- distant recurrence rates now exceed local recurrence rates
- move systemic therapy upfront to address micrometastatic disease earlier
- particularly in high-risk patients

PRODIGE 23 trial: study design

NCT 01804790; EudraCT 2011-004406-25



*according to center choice throughout the study; adjuvant chemotherapy was mandatory in both arms regardless of ypTNM stage.

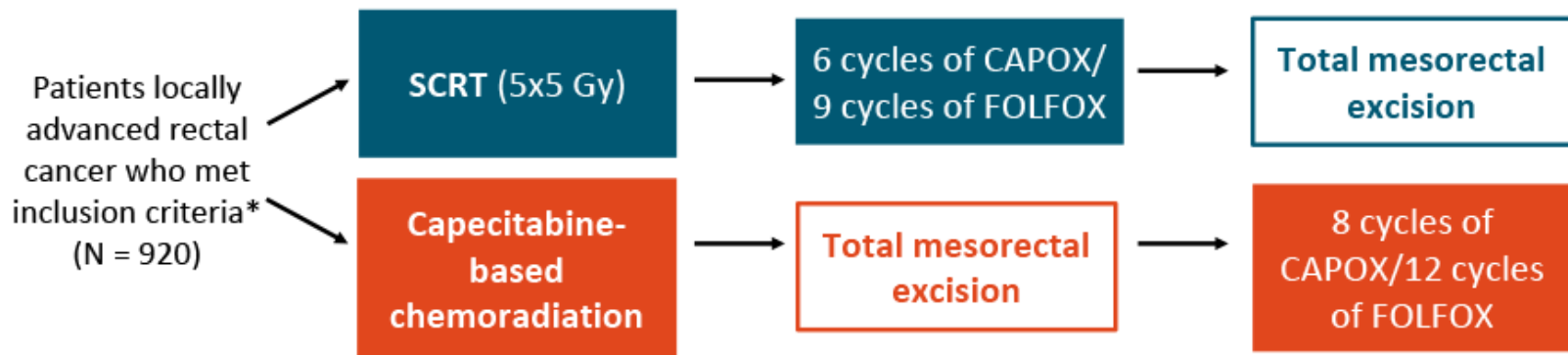
PRODIGE 23 trial: results

NCT 01804790; EudraCT 2011-004406-25

Endpoint	Modified FOLFIRINOX Followed by Chemoradiotherapy	Chemoradiotherapy	Hazard Ratio; P Value
3-year disease-free survival	75.7%	68.5%	0.69; $P = .034$
3-year metastasis-free survival	78.8%	71.7%	0.64; $P = .017$
Noncurative surgery	0%	3.7%	$P = .007$
Pathologic complete response (ypT0N0)	27.8%	12.1%	$P < .001$
Grade 3 or 4 adverse events with adjuvant chemotherapy	44.4% (3 months of chemotherapy)	52.5% (first 3 months of chemotherapy)	$P = .03$
		74.1% (total 6 months of chemotherapy)	$P < .001$

RAPIDO: Preoperative Short-Course Radiotherapy and Chemotherapy for Locally Advanced Rectal Cancer

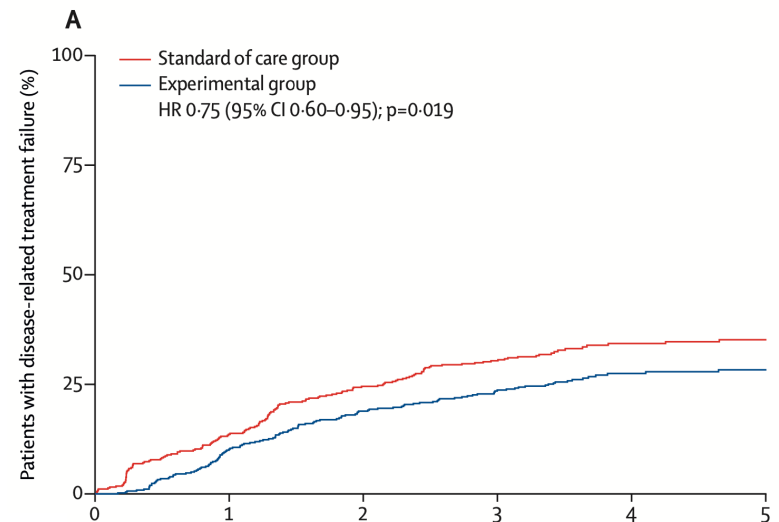
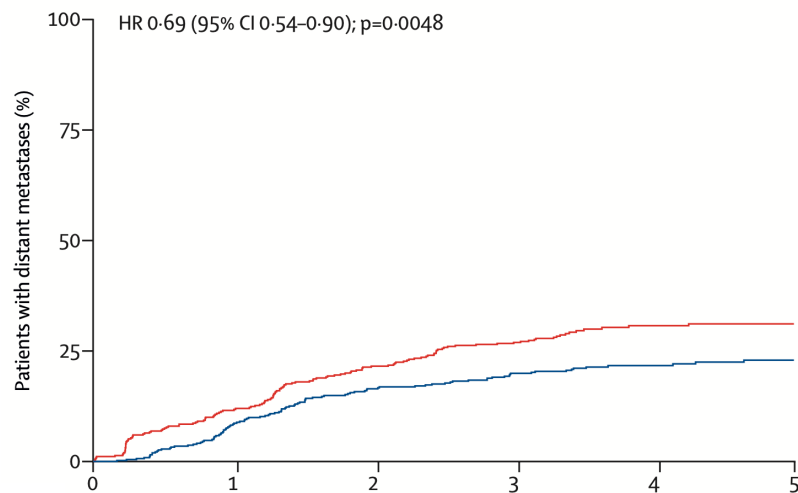
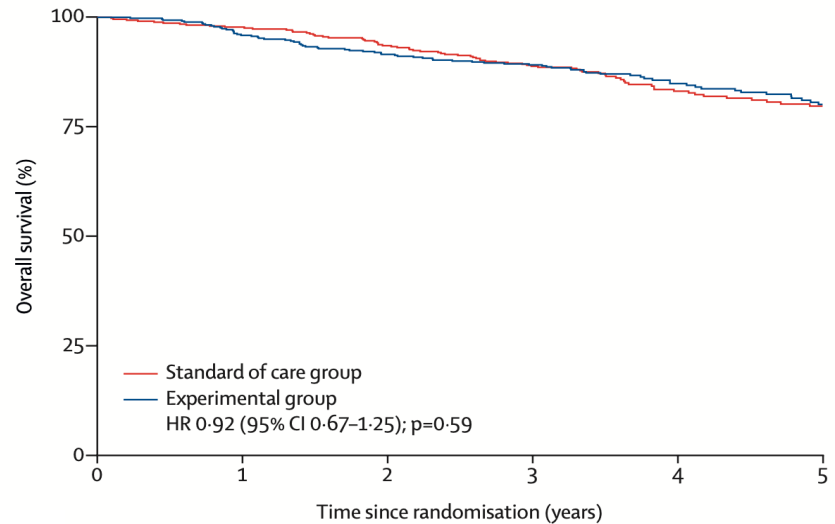
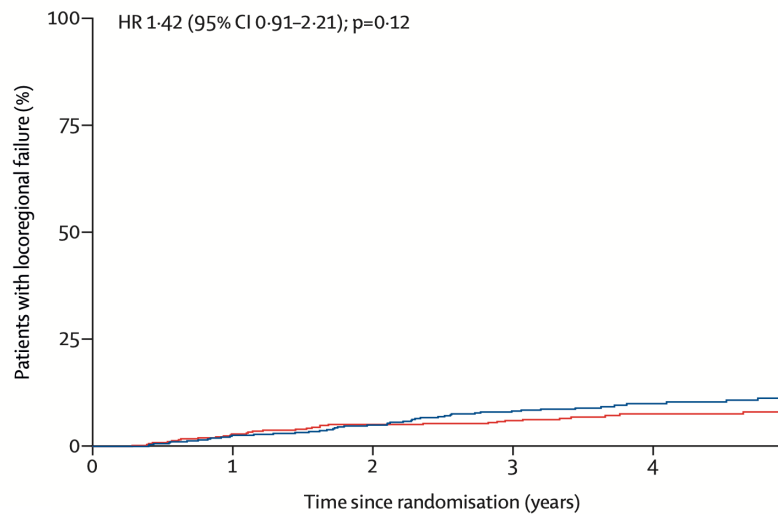
- Randomized, international, multicenter phase III trial



*Inclusion criteria: biopsy-proven primary adenocarcinoma of the rectum, 18 years or older, absence of distant metastases, MRI with high-risk features (T4a/b, extramural vascular invasion +N2, mesorectal fascia + enlarged lymph nodes).

- Primary endpoints: disease-related treatment failure
- Secondary endpoints: OS, R0 rate, pCR, toxicity, surgical complications, QoL at 3 yrs

RAPIDO: Preoperative Short-Course Radiotherapy and Chemotherapy for Locally Advanced Rectal Cancer



Outcomes	RAPIDO	PRODIGE 23
	(TNT vs. CRT)	(TNT vs. CRT)
Median FU	4.6 yrs	3.8 yrs
Primary endpoint	3-yrs DrTF	3-yrs DFS
	23.7% vs. 30.4% (HR 0.75 [95% CI 0.60–0.96]; $p = 0.019$)	75.7% vs. 68.5% (HR 0.69 95% [CI 0.49–0.97]; $p = 0.034$)
3-year MFS	80% vs. 73.2%	78.8% vs. 71.7%
pCR rate	28.4% vs. 14.3%	27.5% vs. 11.7%
Local relapse	8.7% vs. 5.4%	4.8% vs. 7%
3-year OS	89.1% vs. 88.8%	90.8% vs. 87.7%