

8th

www.8thlungcancerseminar.gr



Lung Cancer Seminar


23-25 September 2022 Cultural Foundation of Tinos Tinos Island GREECE

ακτινοθεραπεία
μεσοθωρακίου μετά από
χειρουργείο


Ιωάννης Γεωργακόπουλος
Ακτινοθεραπευτής Ογκολόγος

epidemiology

Estimated New Cases

		Males		Females		
Prostate	268,490	27%		Breast	287,850	31%
Lung & bronchus	117,910	12%		Lung & bronchus	118,830	13%
Colon & rectum	80,690	8%		Colon & rectum	70,340	8%
Urinary bladder	61,700	6%		Uterine corpus	65,950	7%
Melanoma of the skin	57,180	6%		Melanoma of the skin	42,600	5%
Kidney & renal pelvis	50,290	5%		Non-Hodgkin lymphoma	36,350	4%
Non-Hodgkin lymphoma	44,120	4%		Thyroid	31,940	3%
Oral cavity & pharynx	38,700	4%		Pancreas	29,240	3%
Leukemia	35,810	4%		Kidney & renal pelvis	28,710	3%
Pancreas	32,970	3%		Leukemia	24,840	3%
All Sites	983,160	100%		All Sites	934,870	100%

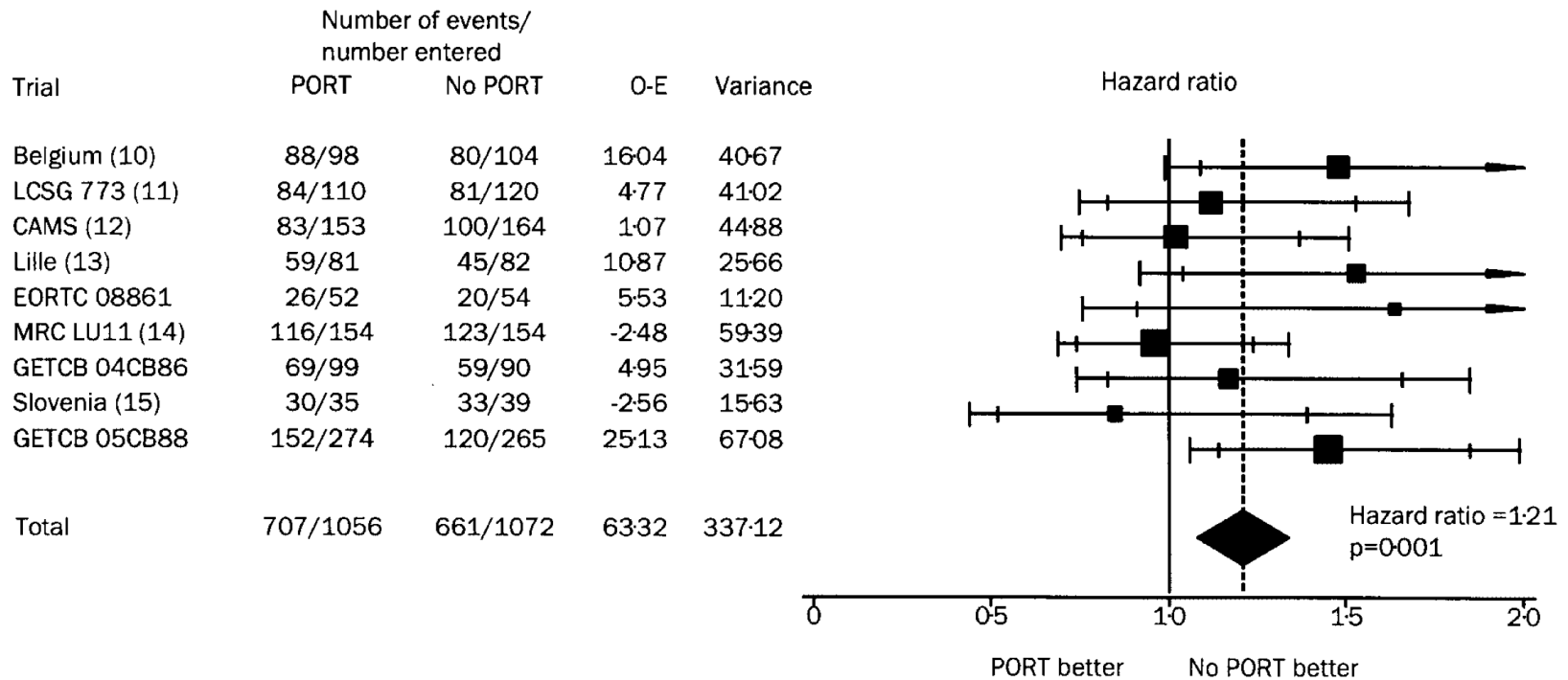
Estimated Deaths

		Males		Females		
Lung & bronchus	68,820	21%		Lung & bronchus	61,360	21%
Prostate	34,500	11%		Breast	43,250	15%
Colon & rectum	28,400	9%		Colon & rectum	24,180	8%
Pancreas	25,970	8%		Pancreas	23,860	8%
Liver & intrahepatic bile duct	20,420	6%		Ovary	12,810	4%
Leukemia	14,020	4%		Uterine corpus	12,550	4%
Esophagus	13,250	4%		Liver & intrahepatic bile duct	10,100	4%
Urinary bladder	12,120	4%		Leukemia	9,980	3%
Non-Hodgkin lymphoma	11,700	4%		Non-Hodgkin lymphoma	8,550	3%
Brain & other nervous system	10,710	3%		Brain & other nervous system	7,570	3%
All Sites	322,090	100%		All Sites	287,270	100%

role of adjuvant RT

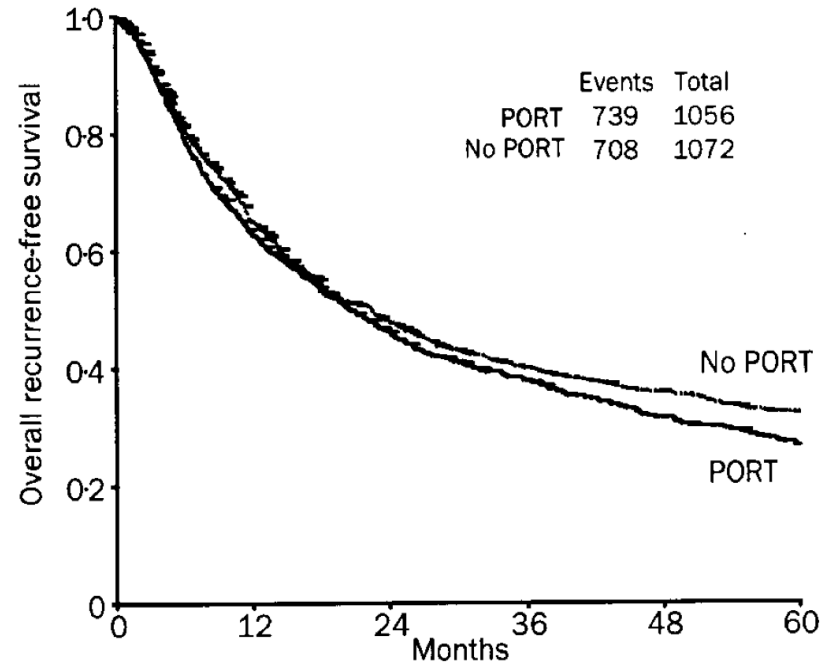
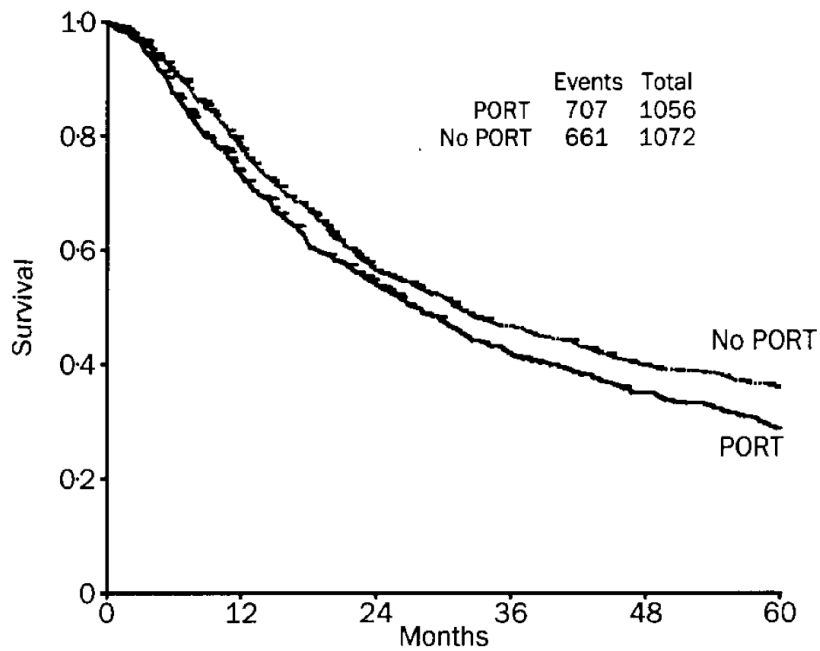
adjuvant RT in completely resected NSCLC

PORT Metaanalysis of RCTs



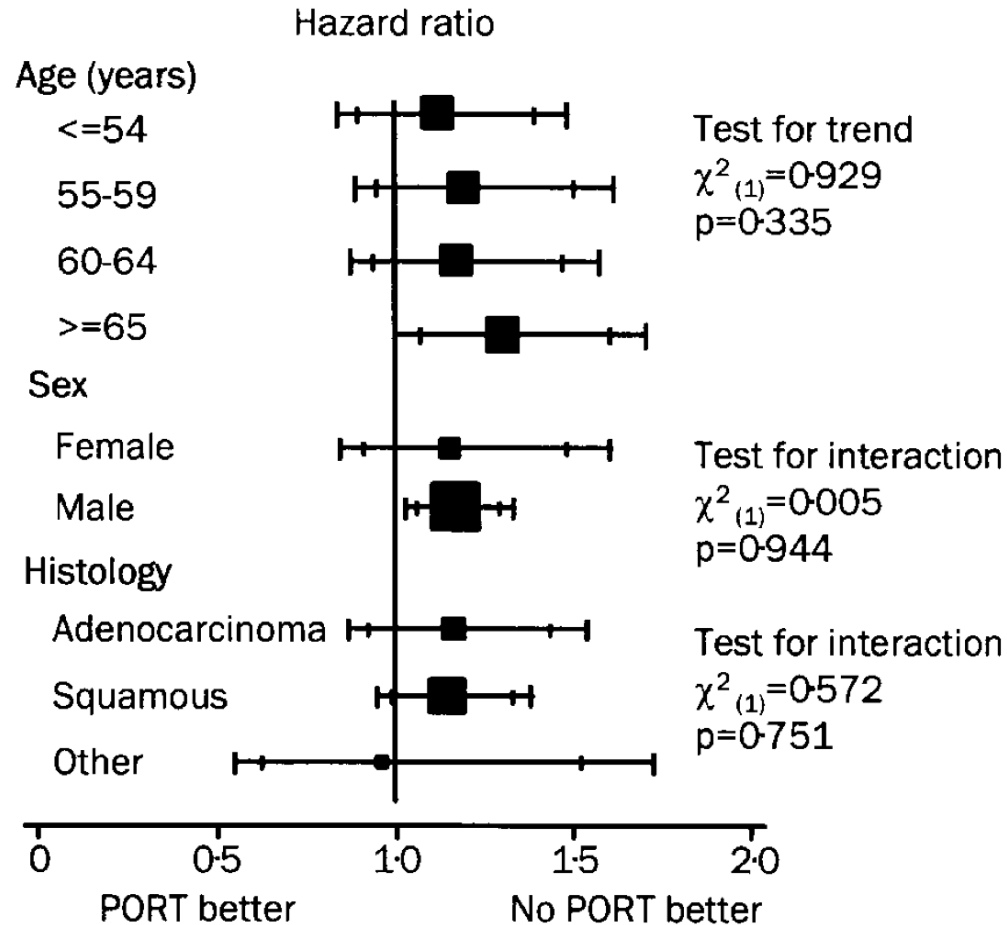
adjuvant RT in NSCLC

PORT Metaanalysis of RCTs



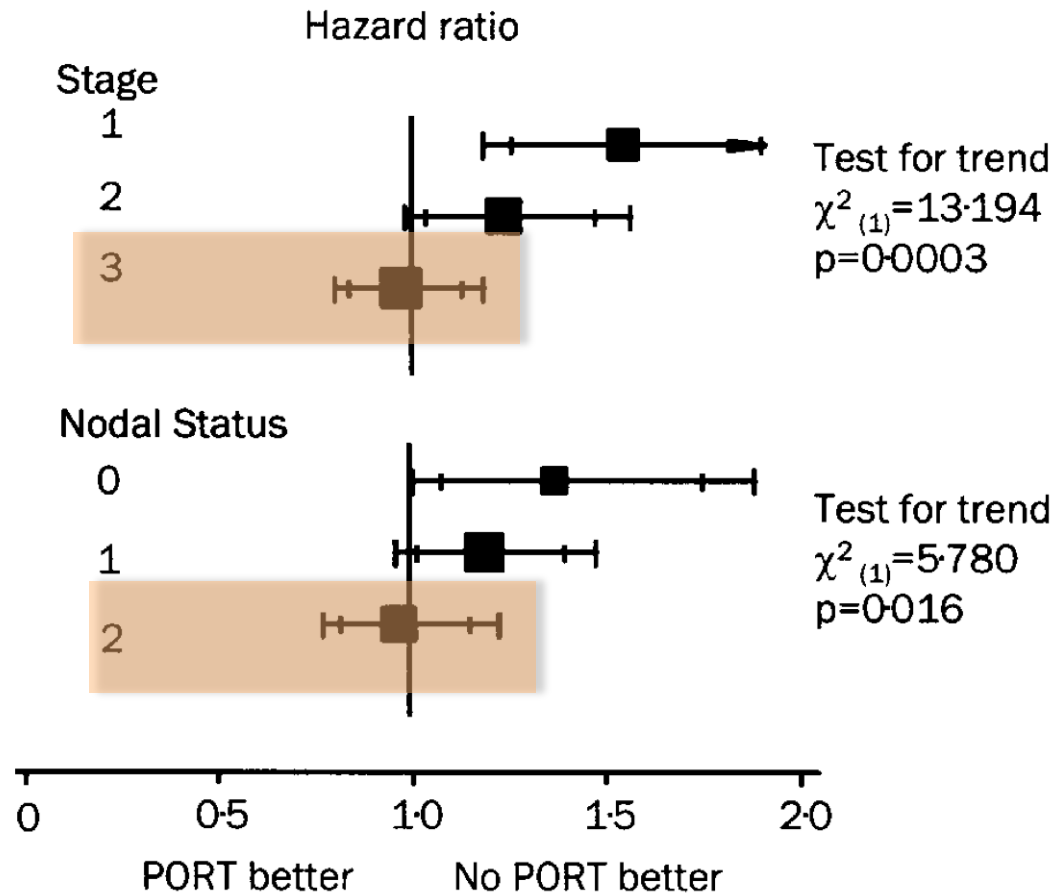
adjuvant RT in NSCLC

PORT Metaanalysis of RCTs



adjuvant RT in NSCLC

PORT Metaanalysis of RCTs



adjuvant RT in NSCLC guidelines

- early stage

R1 – R2 resection

upstaged surgically to pN2

- locally advanced

stage IIIA pN2

R1 – R2 resection in early stage NSCLC